



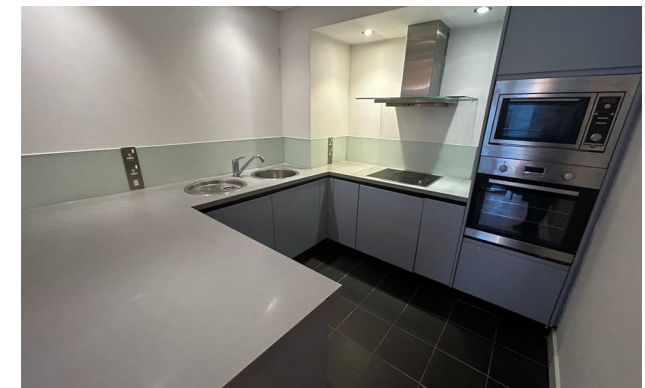
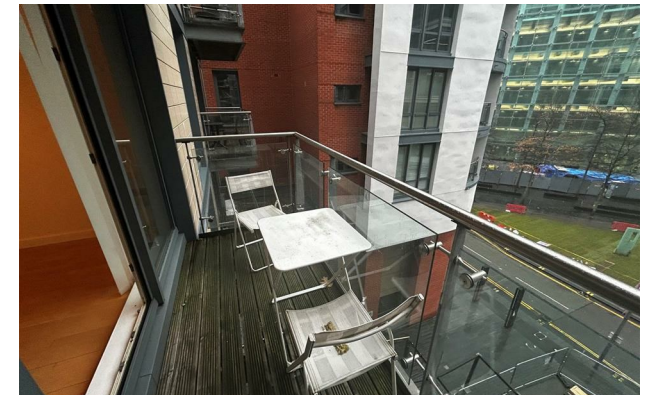
jordanfishwick

Apt 3.37 6 Leftbank, Spinningfields, M3
£995 Per Calendar Month



6 Leftbank Manchester M3 3AE

£995 Per Calendar Month



The Property

PLEASE NOTE THERE IS SCAFFOLDING UP ON THE BUILDING, SOME DISRUPTIONS MAY OCCUR


Available Early March. One Bedroom apartment with Balcony at Leftbank Apartments. Located right in the heart of Spinningfields, Leftbank is a perfect location for a tenant who wants everything on their doorstep- benefitting from some of Manchester's best bars & restaurants close by, and a short walk to Market street. On site there is a 24 hour concierge and secure entry access.

Located on the 3rd floor and looking over Spinningfields business district the apartment is larger than average and has been recently repainted throughout. Comprising of entrance hallway with solid wood flooring, leading to open plan lounge/ living area with fully fitted kitchen, integrated appliances and balcony. The bedroom has a floor to ceiling window and fitted wardrobes. Main full bathroom with mixer shower over. Part Furnished. No Parking. Tax Band C. EPC Rating C.

VIDEO/ PHOTO OFFERS NOT ACCEPTED - PLEASE BOOK AN IN PERSON VIEWING

- Available NOW
- One Bedroom Apartment
- Part Furnished
- Balcony
- EPC Rating C
- Council Tax Band C
- No Parking
- Spinningfields Location



Energy Efficiency Rating		
	Current	Potential
Very energy efficient - lower running costs		
(92 plus) A		
(81-91) B	80	81
(69-80) C		
(55-68) D		
(39-54) E		
(21-38) F		
(1-20) G		
Not energy efficient - higher running costs		
England & Wales	EU Directive 2002/91/EC 	





These particulars are believed to be accurate but they are not guaranteed and do not form a contract. Neither Jordan Fishwick nor the vendor or lessor accept any responsibility in respect of these particulars, which are not intended to be statements or representations of fact and any intending purchaser or lessee must satisfy himself by inspection or otherwise as to the correctness of each of the statements contained in these particulars. Any floorplans on this brochure are for illustrative purposes only and are not necessarily to scale.

Offices at: Offices at Chorlton, Didsbury, Disley, Hale, Glossop, Macclesfield, Manchester Deansgate, Manchester Whitworth Street, New Mills, Sale, Wilmslow and Withington